

ANT140F2

FIBERGLASS COLLINEAR ANTENNA 2.5 dBd

DESCRIPTION AND FEATURES:

The Telewave ANT140F2 collinear antenna is an extremely rugged, moderate gain version of the industry-standard ANT150F6 antenna. This compact antenna produces 2.5 dBd gain, and is designed for operation in all environmental conditions. The antenna is constructed with brass and copper elements, with a path to DC ground potential for lightning impulse protection. All junctions are fully soldered to prevent RF intermodulation, and each antenna is completely protected within a high-tech ruggedized radome to ensure survivability in the worst environments. The "Cool Blue" radome provides maximum protection from corrosive gases, ultraviolet radiation, icing, salt spray, acid rain, and wind blown abrasives.

MOUNTING:

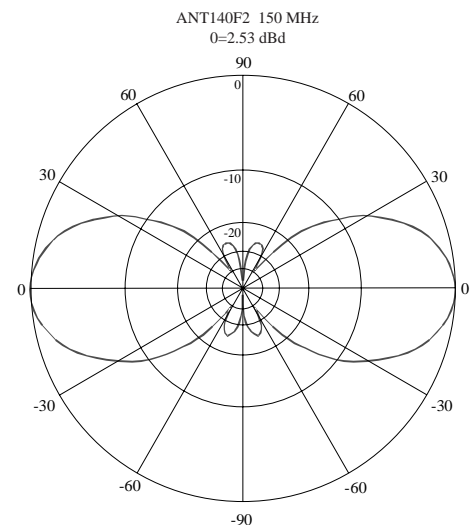
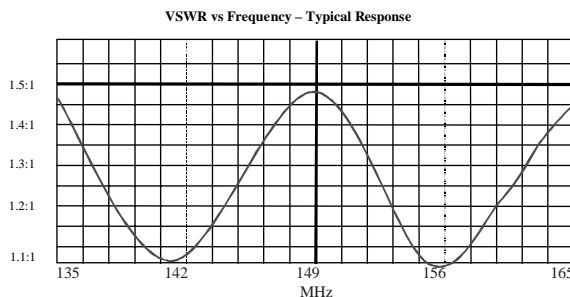
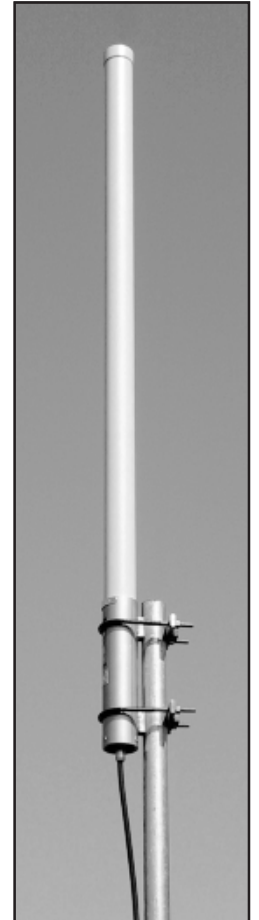
The ANT140F2 includes a dual clamp set for mounting to a 1.5" to 3" diameter support pipe. Stand off and top mounts are also available.

ELECTRICAL SPECIFICATIONS:

Power Rating (typical)	500 Watts
Gain	2.5 dBd
Frequency Range	135-165 MHz
VSWR	1.5 : 1 or less
Impedance	50 Ohms
Vertical Beamwidth	38 Degrees
Pattern	Omnidirectional
Termination	Recessed Type N-F with 24" RG-213 removeable jumper. 7-16 DIN-F opt.

MECHANICAL SPECIFICATIONS:

Dimensions	66" L x 2.5" diam.
Tower weight (Antenna + clamps)	14 lb.
Shipping weight	17 lb.
Max. Rated Wind Velocity	200 MPH
Max. Rated Wind Velocity with 0.5" radial ice	150 MPH
Max. Exposed Area	1.35 Sq. ft.
Lateral Thrust at 100 MPH	54 lb.
Bending Moment at top clamp at 100 MPH (40 PSF Flat Plate Equivalent)	83 Ft. lb.



TELEWAVE, INC. 660 Giguere Court San Jose, CA 95133

Toll Free: 1-800-331-3396 Direct: 408-929-4400 Fax: 408-929-4080

<http://www.telewave.com>

Email: sales@telewave.com